

An Alternative Approach to Alternative Beta

Thierry Roncalli* Jérôme Teïletche†

April 2007

Abstract

Hedge fund replication based on factor models is encountering growing interest. In this paper, we investigate the implications of substituting standard rolling windows regressions, which appear ad-hoc, with more efficient methodologies like the Kalman filter. We show that the copycats constructed this way offer risk-return profiles which share several characteristics with the ones posted by hedge funds indices: Sharpe ratios above buy-and-hold strategies on standard assets, moderate correlation with standard assets and limited drawdowns during equity downward trends. An interesting result is that the shortfall risk seems less important than with hedge fund indices and regressions based-trackers. We finally propose new breakdowns of hedge fund performance into alpha, traditional beta and alternative beta.

Hedge fund replication has become highly fashionable during recent months. Under this generic term, three main approaches can be identified:

- *Mechanical duplication of strategies.* A growing number of investment banks are proposing products which aims to reproduce in a systematic and quantitative manner a strategy followed by hedge funds. For instance, several investable indices have been proposed which mark-to-market systematic short of put options or variance swaps. Thanks to the positive premia between implied and realized volatilities, this kind of strategy seems able to generate superior Sharpe ratios while exposing to the risk of huge losses when the underlying asset plunges (LO [2005], GOEZTMANN *et al.* [2007]). Other candidates include trend-following strategies, i.e. CTA/managed futures, which can be mimicked through lookback straddles (see FUNG and HSIEH [1997]), merger arbitrage strategies which can be replicated by passive investments in all announced mergers (MITCHELL and PULVINO [2001]), fixed income funds that FUNG and HSIEH [2002] have shown to be reproducible through credit exposure and constant-maturity products, long-short equity which can be mimicked through beta-one plus small vs large caps exposures, convertible arbitrage (AGARWAL *et al.* [2006]) or, for Global Macro, systematic FX carry strategies. All in all, FUNG and HSIEH [2007] estimate that 75% of net assets of hedge fund are covered by this type of systematic strategies.
- *Replication of distribution.* A very different approach has been advocated by KAT and PALARO [2007]. Their postulate is that investors enter into hedge funds for their characteristics in terms of expected returns, volatility and correlation, not for their month-by-month return. While the argument might be generalized to other assets, it is probably all the more meaningful as diversification is a major motivation for investing in hedge funds. In practice, the copycat is based on a passive futures trading strategies¹. The investor first determines its existing portfolio (for instance, an equally-weighted mix of US Treasuries and S&P 500), the futures he wants to trade and then the statistical properties in terms of correlation with the existing portfolio, shortfall probability, skewness sign, etc. The investor then receives the line-up of the strategy: that is the daily trading volume of each futures contract he has to trade to replicate the fictive option so that in the end the fund has the desired properties. However, there is no indication on how long it will take for this result to materialize and,

*SGAM Alternative Investments and University of Evry.

†SGAM Alternative Investments and University of Paris Dauphine.

¹See the website www.fundcreator.com for more details.

above all, this is based on the strong implicit assumptions that correlation among underlying futures is constant through time.

- *Factor-based model.* This approach relies on linear regressions of hedge fund returns on a list of market factors, being representative of long-only or spread exposures of hedge funds (equity, credit and bond indices; value/growth spread, small/big caps spread, etc.). A large empirical literature has studied this form of models; see, among many others, FUNG and HSIEH [1997,2004], HASANHODZIC and LO [2006], JAEGER and WAGNER [2005], AGARWAL and NAIK [2004]. Results appear to be mixed and highly different depending on strategies: while directional strategies (equity hedge, emerging markets, global macro) present strong exposures, pure market-neutral/arbitrage ones naturally show limited exposures. Despite these mixed results, the hedge fund industry seems to be largely exposed as a whole, mainly because of the dominant market share of long/short strategies. For instance, based on monthly returns, the correlation of the HFR index with the S&P 500 index is more than 70% over the period 1990-2006. This evidence has led to the expression “alternative beta” which denotes the part of the hedge fund returns that can be attributed to directional investments in standard assets. One huge difference between alternative beta and traditional beta is that for hedge funds, exposure is not a passive one but should integrate non-linear effects. For instance, as they follow dynamic strategies, hedge funds regularly change their exposure, which gives rise to option-like payoffs². To deal with these features, authors have incorporated measures of option payoffs such as long systematic position in straddles.

These approaches differ in various dimensions. The first two seem more ambitious in that they hope to generate synthetic clones whose performance will be similar to the one (gross of fees) of hedge funds. The last approach simply promises to get the fraction of hedge fund returns which can be linked to the alternative beta, that is to their varying exposures – including the possibility of shorting – to the standard assets. In this perspective, part of the hedge fund alpha is attributed to this dynamic switching between assets. But all the alpha cannot be reproduced as alpha can stem from investing in illiquid securities or ultra-high frequency trading and thus not reproducible through low frequency trading in liquid futures. Later in this article, we try to disentangle hedge fund returns into alpha, alternative beta and traditional beta in a more precise way. While this approach appears less ambitious, it has clear advantages on top of which simplicity, transparency and cost-effectiveness. On the contrary, as they aim to replicate complicated hedge fund strategies, the first two approaches expose itself to operational risks, black-box criticisms or (possibly) high trading costs³. Thus, if the major objective is to get higher transparency, lower regulatory constraints or liquidity, one should concentrate on the factor-model approach. In this perspective, it is not surprising that, to date, this methodology has been the most widespread. Still, most existing approaches have in common a deficiency: they are based on OLS regressions over rolling windows whose time-lag is determined in an ad-hoc fashion. More efficient econometric techniques are available such as the Kalman filter. This paper investigates whether more robust alternative betas processes can be built using such techniques⁴.

The rest of the paper is as follows. In Section 2, we describe the rolling OLS and the Kalman filter and illustrate their differences through examples. In Section 3, we analyze their difference when applied to the alternative beta issue. In Section 4, we present some applications of Kalman filter alternative betas concept. First, we analyze their properties as investment vehicles, comparing them with standard hedge fund investments. Second, we propose new decompositions of hedge fund performances into alpha and beta components. Conclusions are drawn in Section 5.

²In an early analysis, MERTON [1981] showed that a manager pursuing a strategy of market timing between several assets is likely to generate similar returns to those of an optional position on one of the assets without nonetheless taking up a position on options.

³Even in the case of the approach of KAT and PALARO [2007] which is based on liquid futures, the tailor-made specification for each investor makes the minimum investment size very high due (at least EUR 20 Mns according to information disseminated on the FundCreator website).

⁴Another promising approach has been advocated by Darolles and Mero [2007]. Building on the methodology developed by Bai and Ng [2002, 2003], the authors estimate latent factors models from a large sample of individual funds. After extracting the number of appropriate factors, they identify them with standard market factors.

1 Kalman filter and dynamic allocation

1.1 Recovering dynamic allocation

Let R_t and $F_t^{(i)}$ be respectively the return of the hedge fund strategy and the returns of the i individuals factors ($i = 1, \dots, m$) at time t . We have:

$$R_t = \sum_{i=1}^m w_t^{(i)} F_t^{(i)} \quad t = 1, \dots, T$$

with $w_t^{(i)}$ the weight of the i^{th} individual strategy. The issue is to recover the time-varying allocation $w_t^{(i)}$. We may solve this problem by estimating the local beta of the portfolio with respect to the individual strategies. The regression might or not include an intercept, an aspect we discuss below.

1.1.1 With rolling OLS

One of the most used technique to recover dynamic allocation is the rolling OLS method. In this case, we assume a linear model: $R_t = \sum_{i=1}^m \beta_t^{(i)} F_t^{(i)} + u_t$ and the estimates $\hat{w}_t^{(i)}$ correspond to the OLS estimation of $\beta^{(i)}$ on the period $[t-h, t]$ where h is the rolling window. For instance, HASANHODZIC and LO [2006] use a 24-months lag window. Note that we may use the QP method described in Appendix A to impose some constraints (e.g. $|\beta^{(i)}| \leq 1$) or to center the residuals in the case where no intercept is included into the regression.

1.1.2 With Kalman filter

An alternative approach is to use the Kalman filter described in Appendix B with the model:

$$\left\{ \begin{array}{l} R_t = \sum_{i=1}^m \beta_t^{(i)} F_t^{(i)} + \epsilon_t \\ \beta_t^{(1)} = \beta_{t-1}^{(1)} + \eta_t^{(1)} \\ \vdots \\ \beta_t^{(m)} = \beta_{t-1}^{(m)} + \eta_t^{(m)} \end{array} \right. \quad (1)$$

where $\epsilon_t \sim \mathcal{N}(0, \sigma_\epsilon^2)$ and $\eta_t^{(i)} \sim \mathcal{N}(0, \sigma_i^2)$ are uncorrelated processes. Using the notations introduced in the appendix, the state-space form is $Z_t = \begin{pmatrix} R_t^{(1)} & \dots & R_t^{(m)} \end{pmatrix}$, $c_t = 0$, $H_t = \sigma_\epsilon^2$, $M_t = I_m$, $d_t = 0$, $S_t = I_m$ and Q_t a diagonal matrix such that:

$$Q_t = \begin{pmatrix} \sigma_1^2 & & \mathbf{0} \\ & \ddots & \\ \mathbf{0} & & \sigma_m^2 \end{pmatrix}$$

We assume moreover that $P_0 = \mathbf{0}_m$. It means that we know exactly the initial allocation. We will later discuss this point. We denote θ the vector of parameters to be estimated by maximum likelihood with $\theta = \begin{pmatrix} \sigma_u & \sigma_1 & \dots & \sigma_m \end{pmatrix}$. More details concerning estimation and the Kalman filter methodology are given in Appendix B.

1.2 Some examples

Let us consider an example to illustrate the difference between both methods to evaluate the exposures⁵. We suppose a strategy corresponding to a monthly dynamic allocation between MSCI USA and MSCI EMU since 1990. We assume that the weights are oscillating and are given by $w_t^{USA} = \frac{1}{2} \left(1 + \sin \frac{2\pi t}{\varpi} \right)$ and $w_t^{EMU} = 1 - w_t^{USA}$. In figure 1 and 2, we have estimated the model (1) with the Kalman filter and we compare the estimates with those obtained with 24 months rolling OLS. When the frequency ϖ is long, the rolling OLS technique is able to reproduce the dynamic allocation, but with delay (Figure 1). If the allocation frequency is higher, the rolling OLS may estimate weights very different from the true weights of the dynamic allocation (see Figure 2 with $\varpi = 2Y$).

Figure 1: KF estimates versus Rolling OLS estimates – $\varpi = 5Y$

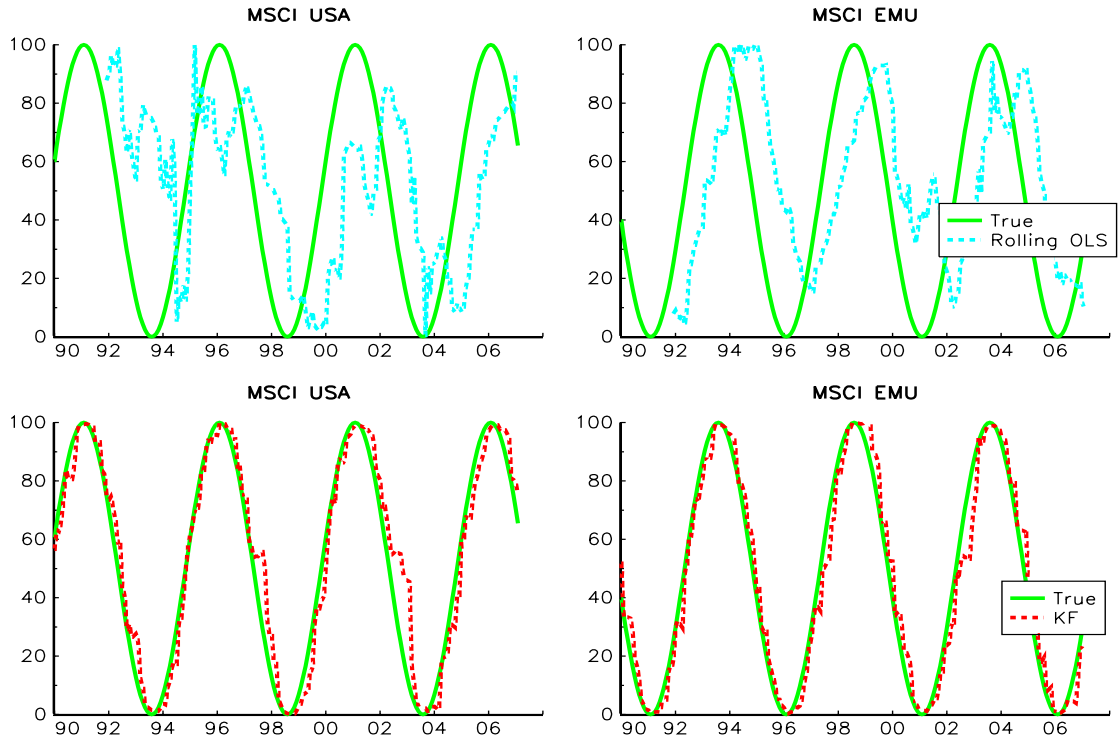


Figure 2: KF estimates versus Rolling OLS estimates – $\varpi = 2Y$

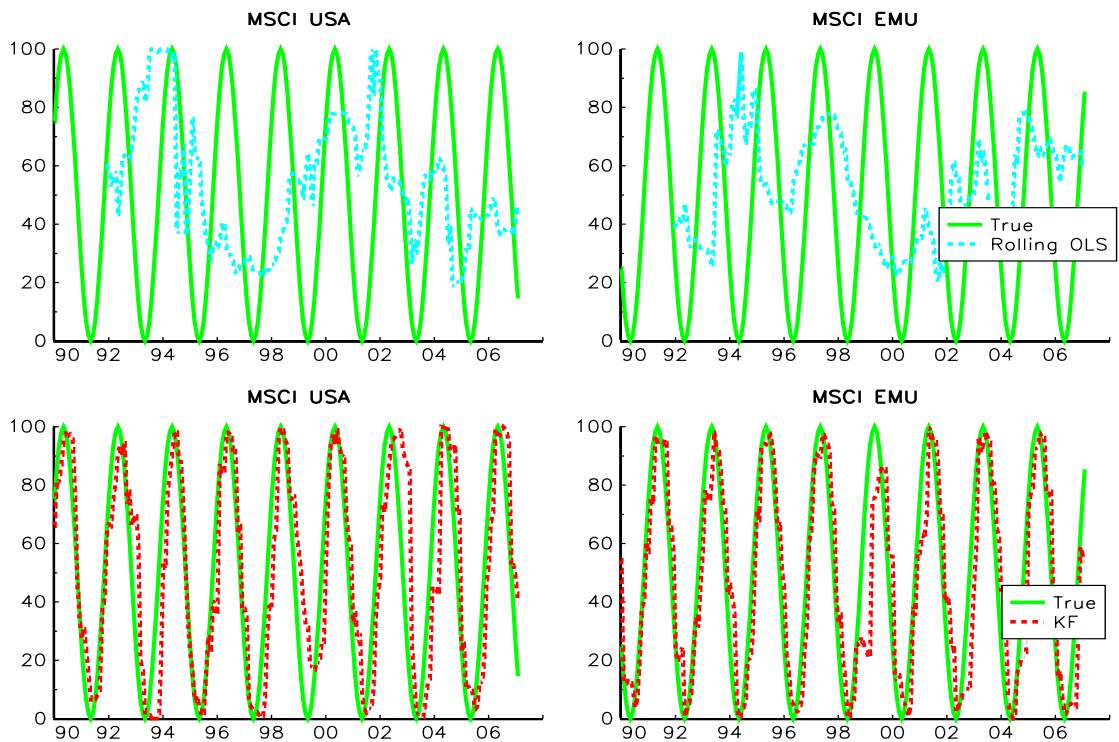


Figure 3: KF estimates versus Rolling OLS estimates - $\varpi = 2Y$

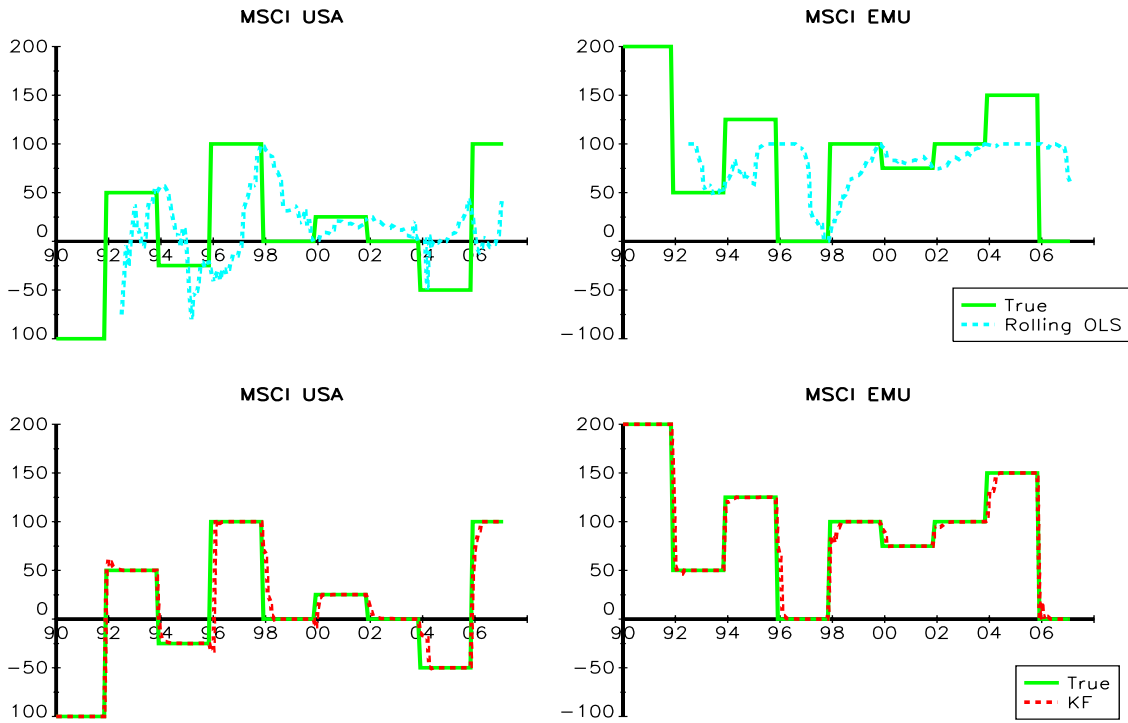
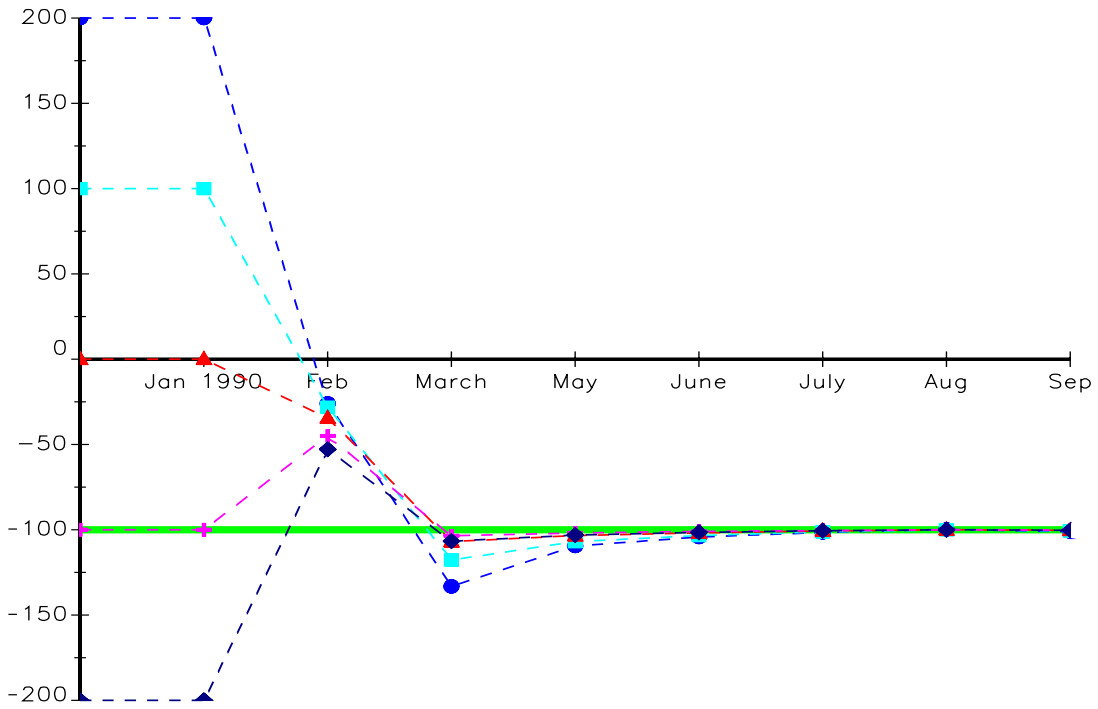


Figure 4: Adaptive learning of the Kalman filter - $\varpi = 2Y$



Let us now consider a more realistic example. We assume that weights change by step of 25%, with $w_t^{USA} = (w \otimes \mathbf{1})_t$ and $w_t^{EMU} = 1 - w_t^{USA}$ for $w = (-1, 0.5, -0.25, 1, 0.25, 0, -0.5, 1, \dots)$. The portfolio is 100% long with the possibility of being short in one asset. Results are reported in Figure 3. One criticism is that state vector estimates might be too much dependant on initial values. But in practice, this is not truly the case as shown in Figure 4. Indeed, one of the properties of the Kalman filter is its high ability to quickly adapt to changing conditions.

It is interesting to remark that because $P_0 = \mathbf{0}_m$, the estimates b_t and $b_{t|t-1}$ are homogeneous with respect to the vector of parameters θ , that is they do not change if θ is scaled by a factor κ . To show this property, we remark that if $Q^* = \kappa^2 Q$ and $H^* = \kappa^2 H$, it comes that $P_{t|t-1}^* = \kappa^2 P_{t|t-1}$, $F_t^* = \kappa^2 F_t$ and $P_t^* = \kappa^2 P_t$. We also have $P_{t|t-1}^* Z_t^\top F_t^{*-1} = P_{t|t-1} Z_t^\top F_t^{-1}$, so we prove that $b_{t|t-1}^* = b_{t|t-1}$ and $b_t^* = b_t$. Moreover, we may show that the state vector is invariant if we both scale R_t , $F_t^{(i)}$ and u_t . It means that the interested parameters are the ratios $\sigma_2/\sigma_1, \dots, \sigma_m/\sigma_1$. These ratios give us a direct measure of the dynamic property of the allocation on the individual strategies. Bigger are these ratios, more dynamic is the allocation.

2 A comparison of OLS and Kalman filter when applied to hedge fund replication

We try to estimate the beta using the following six underlying exposures:

1. an equity position in the S&P 500 index,
2. a long/short position between Russell 2000 and S&P 500 indices,
3. a long/short position between Eurostoxx 50 (hedged in USD) and S&P 500 indices,
4. a long/short position between Topix (hedged in USD) and S&P 500 indices,
5. a bond position in the 10-years US Treasury,
6. a FX position in the EUR/USD.

These exposures have been chosen as they correspond to standard exposures identified in the literature (see AGARWAL and NAIK [2004], AMENC, EL BIED and MARTELLINI [2003], GEHIN and VAISSIE [2006], HASANHODZIC and LO [2006], FUNG and HSIEH [2007], JAEGER and WAGNER [2005]) but where we limit ourselves to liquid futures markets. For instance, we do not include any options or OTC swaps and exclude credit indices for which futures have been recently launched but are not enough mature to be included in this context. The models are estimated over the period 1994-2007 and are done on three well-known indices for matter of comparisons: the Composite HFR index, the HFR Funds-of-Funds index and the CSFB-Tremont total index. All of these indices are non-investable, which increase the interest for the exercise of replication here established. To make the backtest more reliable, we incorporate a lag of one month for incorporating the delays in release of indices.

We have estimated the dynamic beta using the rolling OLS technique for various frequencies (12 months, 24 months, 36 months) and the Kalman filter⁶. Results of the estimations are reported in Figures 5, 6 and 7. We observe that whatever the methodology which is used, hedge funds considered as a whole have appeared as long equities as a whole - as captured by the S&P⁷ - and

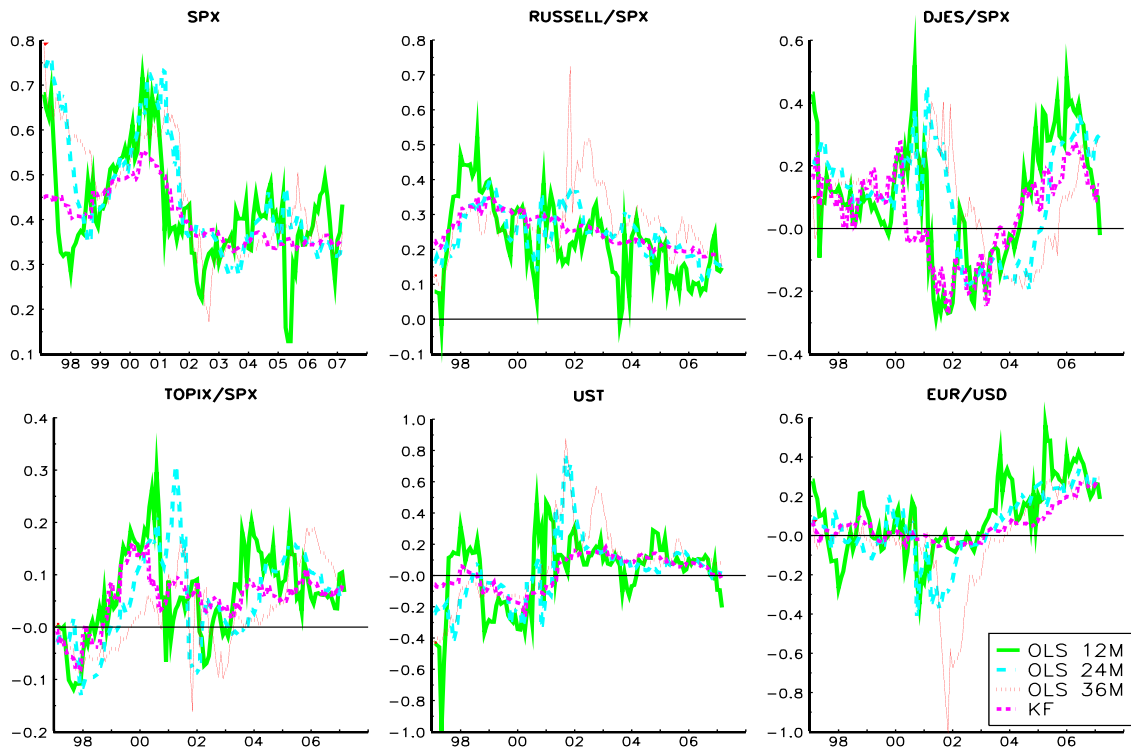
⁵See SWINKELS and VAN DER SLUIS [2006] for a more in-depth analysis in the context of style-based analysis.

⁶One should notice that the parameters of the Kalman filter are estimated over the whole sample. However, here, it is not the coefficients but only their variance which are estimated. It is not clear whether this implies look-ahead bias and in practice, we have found that progressive estimations of the Kalman filter are leading to very similar results. Readers familiar with Kalman filter indices should not be surprised with this result.

⁷The aggregated exposure to the S&P index should be read as the sum of the "S&P" exposure (as mentioned in the figure) minus all the exposures of spreads involving the S&P. In fact, the exposure mentionned as "S&P" recovers the total equity exposure.

long Russell against S&P. For other factors, exposures vary to a large extent between methods. Still, whatever the factor and the index publisher which are considered, the variability of exposures is far lower for the Kalman filter. Obviously, as one is attempting to capture the dynamic beta of hedge fund, stability is not an objective as such. But it is not clear whether it is efficient to have quickly changing exposures if true underlying exposures are themselves highly volatile. Indeed, in this case, the danger is to be always “behind the curve”. For instance, there seems to have been numerous inopportune changes in exposures for the 12 months window, as for instance the large decrease in exposure to S&P in end 1997 or the sharp changes in exposures in 2004/2005. At the other end of the spectrum, a too long window can lead to react too slowly to changing conditions, as is magnified here by the S&P exposure during the collapse of the stock market bubble and the recovery period which has followed. Undeniably, the Kalman filter appears as a good compromise: it posts smooth changes in exposures but has been able very early (even earlier than the 12 months rolling window) to identify the reduction in exposure to equities markets which seems to have characterized hedge funds in late 2000-early2001.

Figure 5: Exposures for the HFR index



More formally, we report in Table 1 some statistics on the simulated returns of the various methodologies. It appears that while some lag windows lead to higher average excess returns than the Kalman filter method, none globally dominates the latter in terms of risk-adjusted returns. As far as capital preservation is concerned, the Kalman filter also seems to be preferred as it often leads to an higher proportion of positive months and systematically to lower drawdowns. Finally, it offers an higher correlation with the underlying hedge fund index.

Figure 6: Exposures for the HFR FoF index

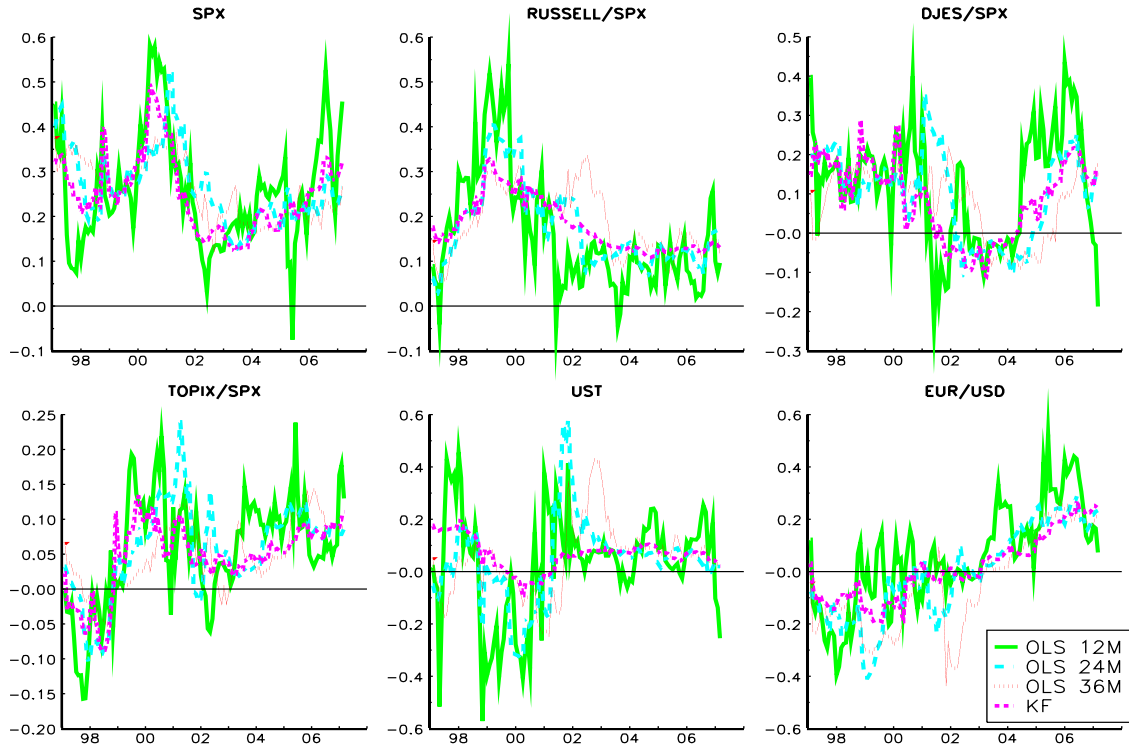


Figure 7: Exposures for the CSFB-Tremont index

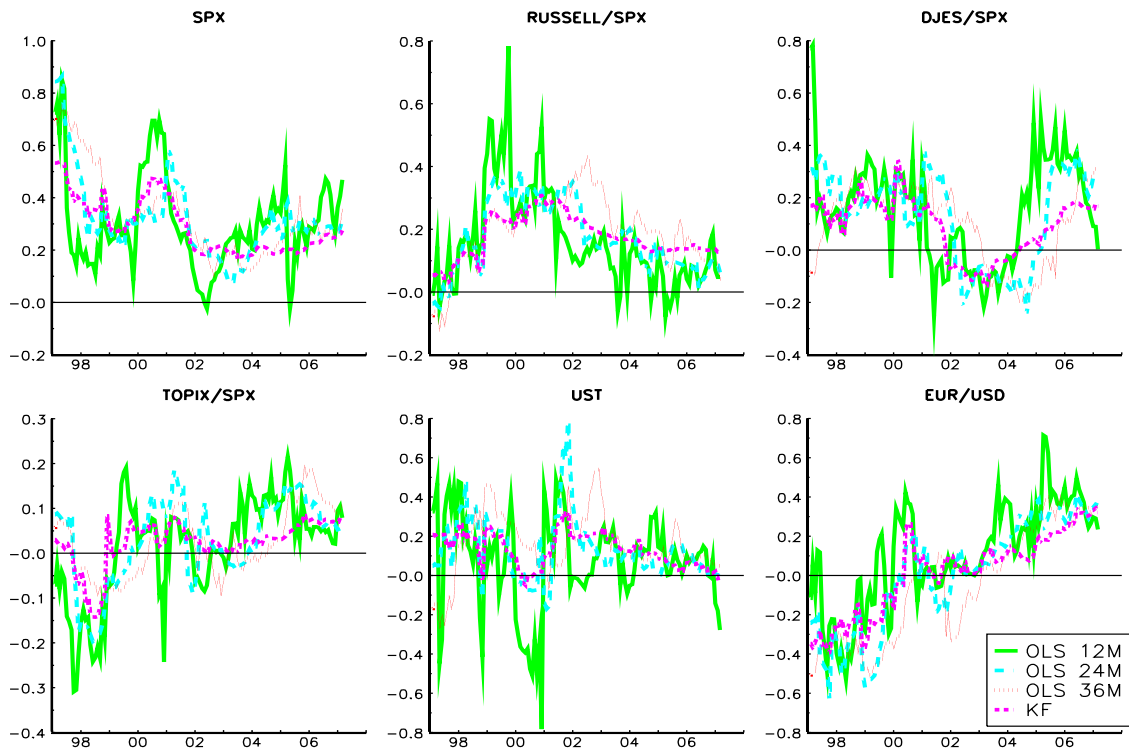


Table 1: Descriptive statistics on simulated factor models

	Rolling OLS			Kalman filter
	12M	24M	36M	
HFR Composite Index				
Average excess return (% per year)	5.30%	4.98%	4.09%	5.28%
Standard deviation (% per year)	7.66%	8.07%	8.92%	7.45%
Sharpe ratio	0.69	0.62	0.46	0.71
Proportion of positive months	70%	68%	67%	70%
Correlation with hedge fund index	84.8%	85.3%	85.7%	91.3%
Maximum drawdown	15.4%	18.7%	21.1%	9.7%
HFR FOF Index				
Average excess return (% per year)	4.36%	4.65%	3.50%	4.52%
Standard deviation (% per year)	5.97%	6.13%	6.00%	5.62%
Sharpe ratio	0.73	0.76	0.58	0.80
Proportion of positive months	70%	75%	72%	71%
Correlation with hedge fund index	71.1%	73.7%	75.8%	75.7%
Maximum drawdown	11.3%	9.5%	7.9%	5.2%
CSFB-Tremont Index				
Average excess return (% per year)	6.49%	7.44%	5.52%	5.49%
Standard deviation (% per year)	7.71%	8.14%	8.19%	6.75%
Sharpe ratio	0.84	0.91	0.67	0.81
Proportion of positive months	66%	73%	68%	70%
Correlation with hedge fund index	67.1%	70.0%	72.9%	73.7%
Maximum drawdown	15.0%	9.2%	9.9%	6.3%

3 Application to alternative beta

3.1 Building a clone

To evaluate whether factor-models replicating funds are worth investing in, we report in Figure 8 the backtest of the strategy over the period 1997-2007 (with cash reinvested in Libor). In Figure 9, we compare the risk-return profile (in terms of mean-variance). More statistics are given in Table 2. Several comments are worth stressing.

First, concerning composite indices of single funds, the trackers post underperformance in face of the indices they try to replicate, despite their fairly high correlation. But perfect replication seems to be an unfair objective in the present case. It is well-known that hedge fund indices are affected by various biases: survivorship bias, self-selection bias⁸. An indication of the validity of this explanation is that this result does not hold for the Funds-of-Funds replication. Indeed, it is widely acknowledged that the returns of Funds-of-Funds are less affected by those biases since, for instance, they do not cease reporting to database when an underlying single fund in which they have invested collapse but their NAVs are directly impacted. Obviously, one should keep in mind that the difference in performance between single funds and funds-of-funds also reflect the additional layer of fees. By and large, it seems that over a full economic and market cycle (that is the last 10 years), trackers post performances which are characteristic of hedge fund performance with a slight underperformance probably due to the lack of alpha generation (an issue on which we return later).

Second, an attractive feature visible in the results is that trackers present larger skewness than the indices. This positive asymmetry shift is also clear when one observes the extrema since trackers exhibit lower minima and higher highs. While it is beyond the purpose of the present paper to deal with this issue, an explanation for this result is that, by construction, factor-based models are getting off strategies similar to writing puts on the market⁹. This would act as a recommendation to be cautious in introducing option payoffs in factor-based trackers.

Third, we can argue on the standard criticism directed at regression-based trackers that their correlation with equities is high. This is undeniably true but the correlation seems to mainly simply reflect the one of the indices they are tracking. In this perspective, it is interesting to notice that the correlation of the CSFB-Tremont tracker with the S&P 500 index is far lower than the one of its HFR counterpart, which is totally consistent with the respective correlation of the indices¹⁰. We also notice that this correlation preservation is also observed for US Treasuries.

Table 2: A statistical comparison of hedge fund indices and their trackers

	HFR		HFR FOF		CSFB-Tremont	
	Index	Tracker	Index	Tracker	Index	Tracker
Average return (% per year)	10.5%	9.2%	7.9%	8.5%	10.4%	9.5%
Standard deviation (% per year)	7.3%	7.5%	6.0%	5.7%	7.2%	6.8%
Sharpe (risk-free rate = 4%)	0.90	0.71	0.66	0.81	0.90	0.81
Proportion of positive months	69.7%	69.7%	65.6%	71.3%	72.1%	70.5%
Skewness	-0.43	0.03	-0.25	1.01	0.18	0.52
Excess kurtosis	3.20	2.42	4.73	5.21	4.04	2.40
Minimum	-8.70%	-7.12%	-7.47%	-3.57%	-7.55%	-4.98%
Maximum	7.65%	8.99%	6.85%	9.01%	8.53%	8.86%
Correlation with S&P 500	72.0%	69.6%	52.9%	55.4%	48.7%	61.4%
Correlation with US Treasuries	-17.2%	-14.5%	-12.4%	-5.1%	-2.7%	3.5%

⁸See for instance Fung and Hsieh [2004] or Lhabitant [2006].

⁹Evidence on this subject is large; see among others Mitchell and Pulvino [2001] or Naik et al. [2004].

¹⁰The higher correlation of the HFR index is often attributed to the heavier weight of equity-linked strategies (notably Equity hedge).

Figure 8: Backtest of the strategy

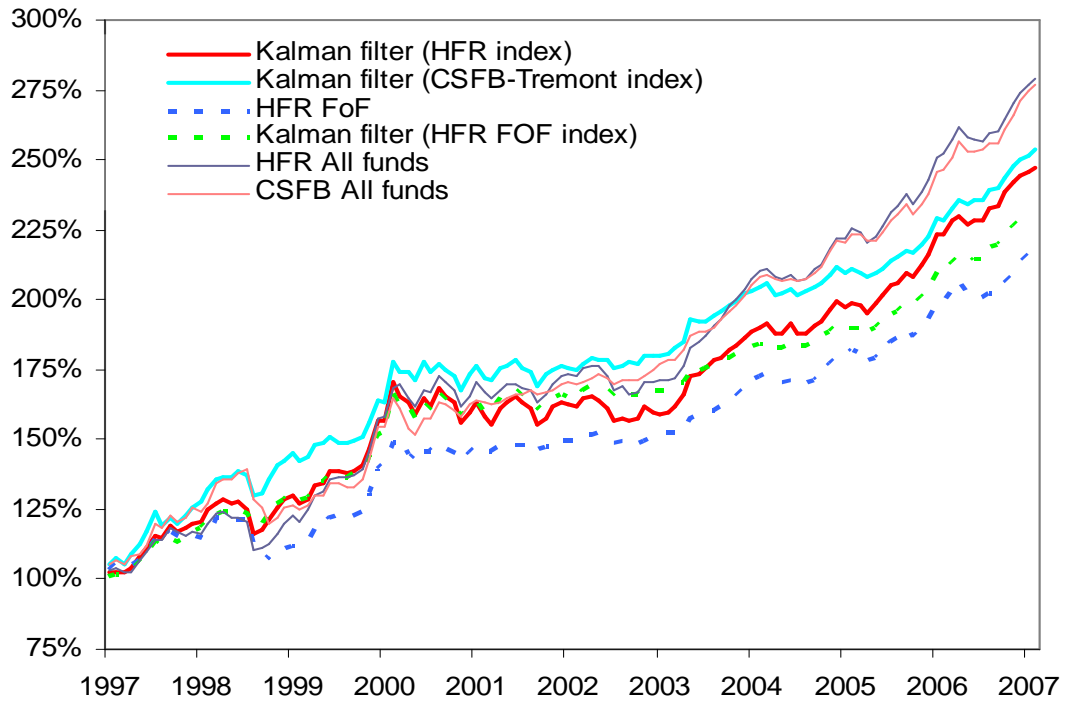
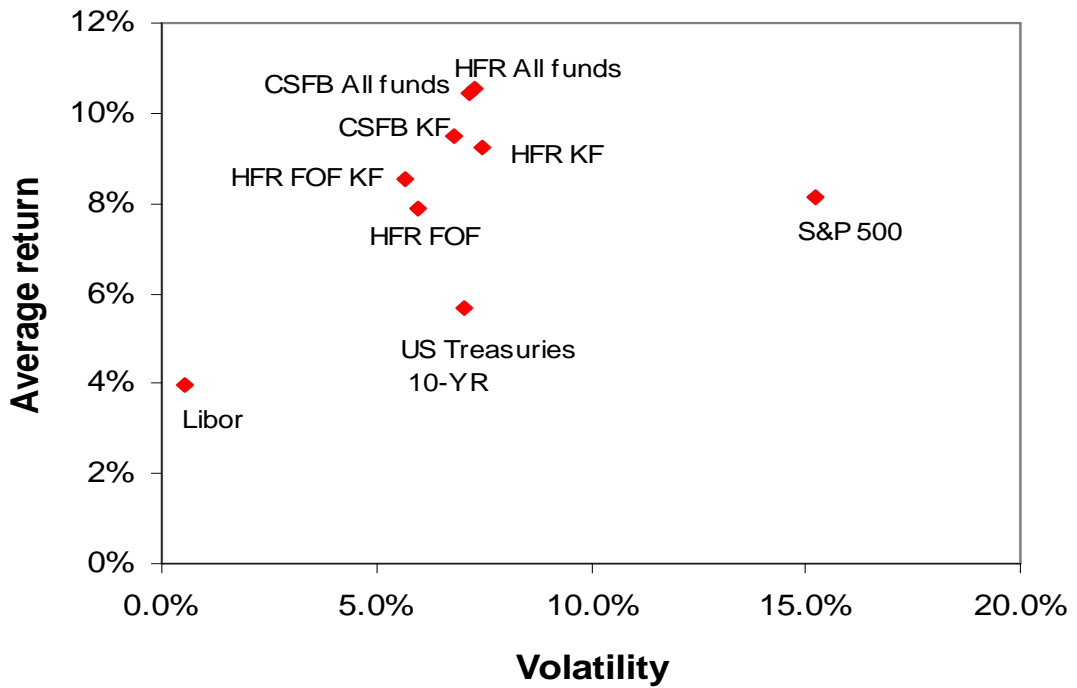


Figure 9: Risk-return profile of hedge funds and standard assets



3.2 Estimating the Alpha

With the previous framework, it is easy to compute the various components of the hedge fund performance. Obviously, the calculations can be crude at best since, in practice, one should take into account the impact of fees and above all of the bias affecting the first moment (average) of hedge fund indices. Let R_t denote the index monthly return observed at time t . $\beta_t^{(i)}$ is the exposure to the i -th factor as estimated through the Kalman filter and $\bar{\beta}^{(i)}$ is its average over the whole period, $\bar{\beta}^{(i)} = T^{-1} \sum_{t=1}^T \beta_t^{(i)}$. Our aim is to decompose the total performance into fixed-traditional beta, alternative beta and alpha. We adopt the following breakdown:

$$\begin{aligned} \text{Excess return: } R_t^* &= R_t - Libor_t \\ \text{Traditional beta: } &\sum_{i=1}^m \bar{\beta}^{(i)} F_t^{(i)} \\ \text{Alternative beta: } &\sum_{i=1}^m \left(\beta_t^{(i)} - \bar{\beta}^{(i)} \right) F_t^{(i)} \\ \text{Alpha: } R_t^* &- \sum_{i=1}^m \beta_t^{(i)} F_t^{(i)} \end{aligned}$$

In Table 3, we report the average values obtained for each of these components. For the various indices, alternative beta does represent between a quarter and a third of the total return and near one-half of the excess return. In Figures 10, 11 and 12, we report the same calculations but for every year. It is interesting to observe that alternative beta has contributions to performance which are most of the time positive and that their contribution was the most important during the bear equity market (2002 and to a lesser extent 2001).

Table 3: Decomposition of the total return of hedge fund indices (January 1997 – February 2007)

(% per year)	HFR Composite	CFSB-Tremont	HFR FOF
Total performance	10.39% (100.0%)	10.30% (100.0%)	7.87% (100.0%)
Cash	3.92% (37.7%)	3.92% (38.1%)	3.92% (49.8%)
Traditional beta	2.79% (26.8%)	2.39% (23.2%)	2.02% (25.6%)
Alternative beta	2.49% (24.0%)	3.09% (30.0%)	2.51% (31.8%)
Alpha	1.19% (11.4%)	0.90% (8.7%)	-0.57% (-7.2%)

4 Conclusion

Hedge fund replication meets growing interest. As far as the motivation is to get liquid and transparent instruments, factor-models appear as an attractive approach. To date, though, available approaches are based on rolling regressions where the window is fixed in an ad-hoc way. In this paper, we have shown that more efficient econometric methods such as the Kalman filter can be used as substitutes to these regressions. They offer risk-return profiles which share several characteristics with the ones posted by hedge funds indices: Sharpe ratios above buy-and-hold strategies on standard assets, moderate correlation with standard assets or limited drawdowns during equity downward trends. An interesting result is that the shortfall risk seems less important than with hedge fund indices. All in all, alternative beta appear to explain between a quarter and a third of the total performance of hedge funds.

References

- [1] AGARWAL, V., W. FUNG, Y-C. LOON and N. NAIK [2006], Risk and return in convertible arbitrage: Evidence from the convertible bond market, London Business School Working Paper.

Figure 10: Year by year decomposition of the performances for the HFR index

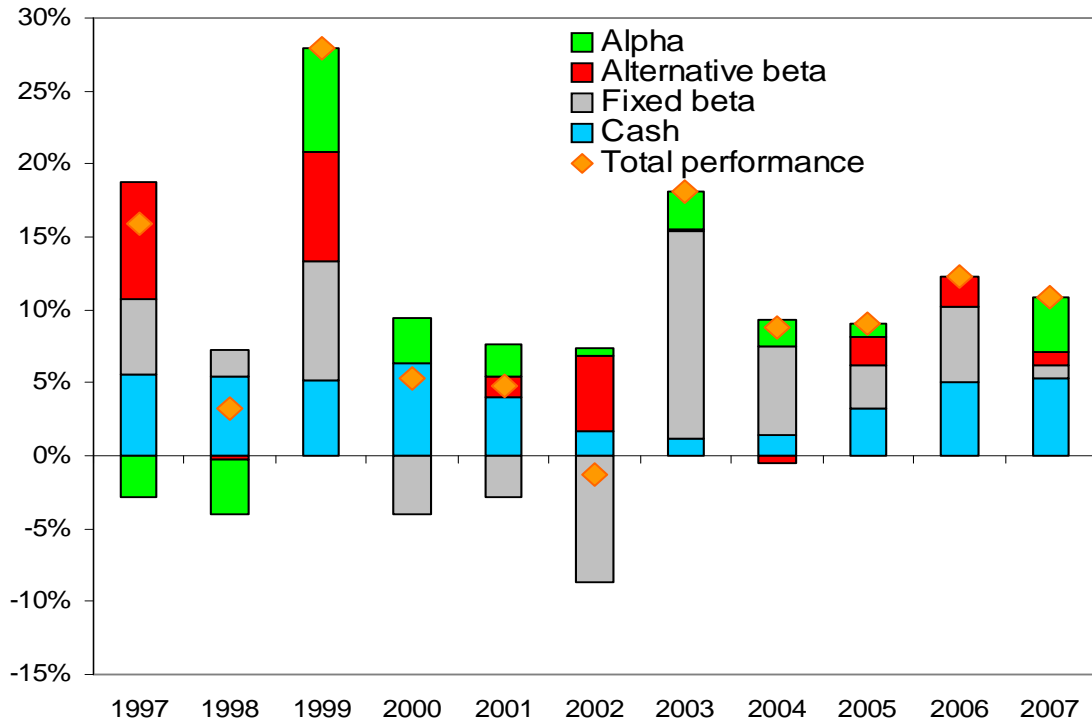


Figure 11: Year by year decomposition of the performances for the CSFB-Tremont index

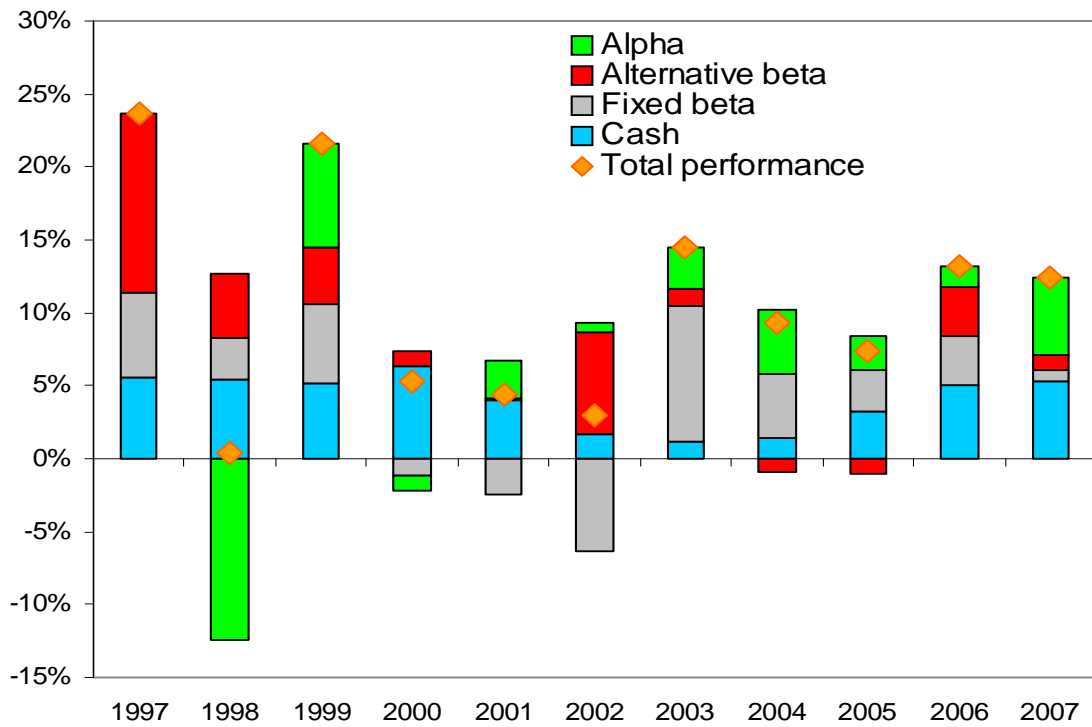
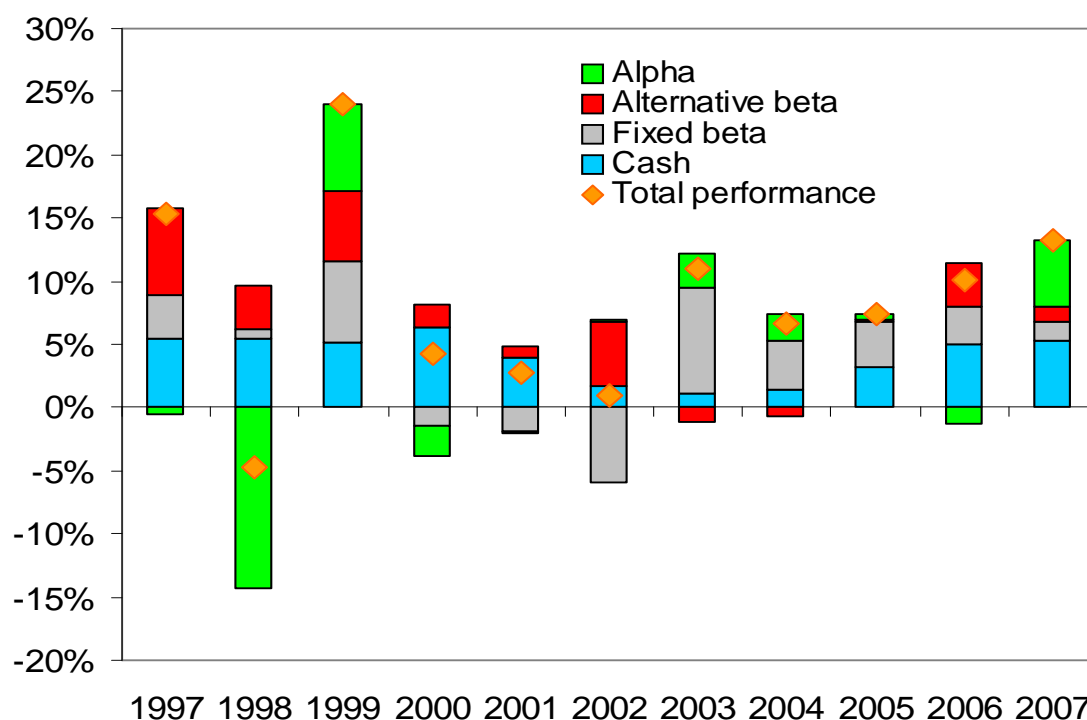


Figure 12: Year by year decomposition of the performances for the HFR FoF



- [2] AGARWAL, V. and N. NAIK [2004], Risks and portfolio decisions involving hedge funds, *Review of Financial Studies*, **17**(1), 63–98.
- [3] AMENC, N., S. EL BIED and L. MARTELLINI [2003], Predictability in Hedge fund Returns, *Financial Analysts Journal*, 59(5), 32-46.
- [4] ANDERSON, B.D.O. and J.B. MOORE [1979], *Optimal Filtering*, Prentice Hall, Englewood Cliffs.
- [5] BAI, J. and S. NG [2003], Inferential Theory for Factor Models of Large Dimensions, *Econometrica*, 71(1), 135-171.
- [6] BAI, J. and S. NG [2002], Determining the Number of Factors in Approximate Factor Models, *Econometrica*, 70(1), 191-221.
- [7] DAROLLES, S. and G. MERO [2007], Hedge Funds Replication and Factor Models, working paper University of Rennes.
- [8] FUNG, W. and D. HSIEH [1997], Empirical characteristics of dynamic trading strategies: The case of hedge funds, *Review of Financial Studies*, **10**(2), 275-302.
- [9] FUNG, W. and D. HSIEH [2002], The Risk in Fixed-Income Hedge Fund Styles, *Journal of Fixed Income*, 12, 6-27.
- [10] FUNG, W. and D. HSIEH [2004], Hedge fund benchmarks: A risk-based approach, *Financial Analysts Journal*, **60**(5), 65-80.
- [11] FUNG, W. and D. HSIEH [2007], Hedge Fund Replication Strategies: Implications for Investors and Regulators, *Financial Stability Review*, Banque de France (forthcoming).
- [12] GEHIN, W. and M. VAISSIE [2005], The right place for alternative betas in hedge fund performance: an answer to the capacity effect fantasy, *EDHEC Risk Management Center*, working paper.

- [13] GOETZMANN, W., J. INGERSOLL, M. SPIEGEL and I. WELCH [2007], Portfolio performance manipulation and manipulation-proof performance measures, *Review of Financial Studies* (forthcoming).
- [14] HARVEY, A.C. [1990], *Forecasting, Structural Time Series Models and the Kalman Filter*, Cambridge University Press, Cambridge.
- [15] HASANHODZIC, J. and A. LO [2006], Can hedge-fund returns be replicated?: The linear case, MIT Laboratory for Financial Engineering, Working Paper.
- [16] JAEGER, L. and C. WAGNER [2005], Factor Modelling and Benchmarking of Hedge Funds: Can Passive Investments in Hedge Fund Strategies Deliver?, *Journal of Alternative Investments*, Winter, 9-36.
- [17] KAT, H. [2007], Alternative routes to hedge fund return replication: A note, *Cass Business School*, Working Paper # 0037, <http://ssrn.com/abstract=939395>.
- [18] KAT, H. and H.P. PALARO [2007], FundCreator-Based Evaluation of Hedge Fund Performance, *Cass Business School, Alternative Investment Research Centre Working Paper*, **40**, <http://ssrn.com/abstract=964301>.
- [19] LHABITANT, F. [2006], *Hedge Funds: Quantitative Insights*, Wiley & Sons.
- [20] LO, A. [2005], *The Dynamics of the Hedge Fund Industry*, Charlotte, NC: CFA Institute.
- [21] MERTON R. [1981], On market timing and investment performance I: An equilibrium theory of value for market forecasts, *Journal of Business*, **54**, 363-406.
- [22] MITCHELL, M. and T. PULVINO [2001], Characteristics of risk in risk arbitrage, *Journal of Finance*, **56**, 2135-75.
- [23] SWINKELS, L. and VAN DER SLUIS P. [2005], Return-Based Style Analysis with Time-Varying Exposures, *The European Journal of Finance*, vol. 12(6-7), pp. 529-552.

Appendix

A Quadratic programming form of linear regression

We consider the linear model $y_t = x_t^\top \beta + \epsilon_t$. The matrix form is $Y = X\beta + \epsilon$. The residual sum of squares is equal to $(Y - X\beta)^\top (Y - X\beta) = Y^\top Y + \beta^\top (X^\top X) \beta - 2Y^\top X\beta$. The OLS estimate $\hat{\beta}$ is also the solution of the quadratic programming problem:

$$\hat{\beta} = \arg \min \frac{1}{2} \beta^\top (X^\top X) \beta - (Y^\top X) \beta \quad (\text{A1})$$

Without any other constraints, the solution is well-known: $\hat{\beta} = (X^\top X)^{-1} X^\top Y$. If we impose linear equality or inequality constraints, we may use a standard QP computer routine to find the solution. It may be the case for example if we want to impose some bounds on the coefficients. When there is no constant in the linear regression, the residuals are not centered. If we want to center the residuals, we impose the linear equality $1^\top X\beta = 1^\top Y$.

B The state space model and the Kalman filter

A state space model is defined by a transition equation and a measurement equation. In the measurement equation we postulate the relationship between an observable vector and a state vector, while the transition equation describes the generating process of the state variables. The state vector β_t is generated by a first-order Markov process of the form:

$$\beta_t = M_t \beta_{t-1} + c_t + S_t \eta_t, \quad t = 1, \dots, T$$

where β_t is the m -dimension state vector, M_t is a $m \times m$ matrix, c_t is a $m \times 1$ vector, S_t is a $m \times G$ matrix. The measurement equation of the state-space representation is:

$$y_t = Z_t \beta_t + d_t + \epsilon_t, \quad t = 1, \dots, T$$

where y_t is a N -dimension time series, Z_t is a $N \times m$ matrix, d_t is a $N \times 1$ vector. η_t and ϵ_t are assumed to be white noise processes of dimensions $G \times 1$ and $N \times 1$ respectively. These two last uncorrelated processes are Gaussian with zero mean and with respective covariances matrices Q_t and H_t , that is:

$$\begin{aligned} \mathbb{E}(\eta_t) &= 0 & \text{and} & \quad \text{var}(\eta_t) = Q_t \\ \mathbb{E}(\epsilon_t) &= 0 & \text{and} & \quad \text{var}(\epsilon_t) = H_t \end{aligned}$$

Let us consider the linear model $y_t = x_t \beta + \epsilon_t$. The model is in state-space form with $Z_t = x_t$, $c_t = d_t = 0$ and $Q_t = 0$:

$$\begin{cases} y_t &= x_t \beta_t + \epsilon_t \\ \beta_t &= \beta_{t-1} \end{cases} \quad (\text{A2})$$

The state vector is constant and not stochastic. Others examples of SSM are structural models or models with unobservable variables. For example, the local level model which is given by:

$$\begin{cases} y_t &= \mu_t + \epsilon_t \\ \mu_t &= \mu_{t-1} + \eta_t \end{cases} \quad (\text{A3})$$

is in state-space form with $Z_t = 1$, $c_t = d_t = 0$ and $\beta_t = \mu_t$. Note that we may use the idea of the stochastic trend of the local level model in the linear model to obtain a linear model with stochastic beta:

$$\begin{cases} y_t &= x_t \beta_t + \epsilon_t \\ \beta_t &= \beta_{t-1} + \eta_t \end{cases} \quad (\text{A4})$$

In this case, the beta are time-varying and are unobservable variables.

One of the challenge in SSM is to estimate the state variables β_t . It may be done using the Kalman filter. If we consider now b_t the optimal estimator of β_t based on all the relevant and available observations at time t , we have $b_t = \mathbb{E}_t[\beta_t]$ where \mathbb{E}_t indicates the conditional expectation operator. The covariance P_t of this estimator is defined by $P_t = \mathbb{E}_t[(b_t - \beta_t)(b_t - \beta_t)^\top]$. We denote also $b_{t|t-1} = \mathbb{E}_{t-1}[\beta_t]$ the optimal estimator of β_t based on all the relevant and available observations at time $t-1$ and $P_{t|t-1}$ the covariance of this estimator. The Kalman filter consists of the following set of recursive equations:

$$\begin{cases} b_{t|t-1} = M_t b_{t-1} + c_t \\ P_{t|t-1} = M_t P_{t-1} M_t^\top + S_t Q_t S_t^\top \\ y_{t|t-1} = Z_t b_{t|t-1} + d_t \\ v_t = y_t - y_{t|t-1} \\ F_t = Z_t P_{t|t-1} Z_t^\top + H_t \\ b_t = b_{t|t-1} + P_{t|t-1} Z_t^\top F_t^{-1} v_t \\ P_t = (I_m - P_{t|t-1} Z_t^\top F_t^{-1} Z_t) P_{t|t-1} \end{cases}$$

We remark that we first need to initialize the Kalman filter. This may be done by assuming that the initial position is a Gaussian variable such that:

$$\mathbb{E}(\beta_0) = a_0 \quad \text{and} \quad \text{var}(\beta_0) = P_0$$

To obtain the estimator of β_t based on all the relevant and available observations at time T , we use the following smoothing filter (called the Kalman smoother):

$$\begin{aligned} P_t^* &= P_t M_{t+1}^\top P_{t+1|t}^{-1} \\ b_{t|T} &= b_t + P_t^* (b_{t+1|T} - b_{t+1|t}) \\ P_{t|T} &= P_t + P_t^* (P_{t+1|T} - P_{t+1|t}) P_t^{*\top} \end{aligned}$$

To illustrate the difference between the three estimators $b_{t|t-1}$, b_t and $b_{t|T}$, we consider the linear model example. Recursive least squares regression corresponds to the estimator b_t whereas the ordinary least squares coefficients are given by $b_{t|T}$. We remark also that the one-step forecast of the recursive least squares regression is exactly $b_{t|t-1}$.

Generally, the state space model contains some unknown parameters other than the state vector. In this case, we may estimate them by maximum likelihood. Let θ be the vector of parameters. The log-likelihood can be expressed in terms of the innovation process. It is then equal to:

$$\ell_t = \log L_t = -\frac{N}{2} \log 2\pi - \frac{1}{2} \log |F_t| - \frac{1}{2} v_t^\top F_t^{-1} v_t$$

For example, we have to estimate the volatility of the residuals u_t in the the model (A2) and the volatilities of the stochastic components η_t in the model (A3).